

INSTRUCTIONS

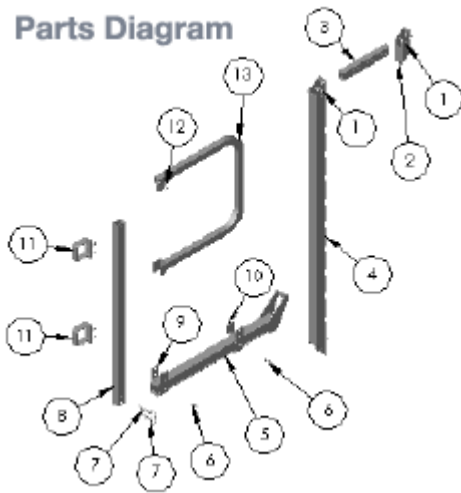
WallWalker® Setup and Use Instructions

Know your Local, State and Federal Codes

INITIAL ASSEMBLY AND INSPECTION

1. Inspect the WallWalker® unit and parts for any defects or shipping damage.
2. Ensure that you received all standard unit parts shown in the parts diagram excluding accessories (sold separately).
3. Remove the tab lock pin at the top of the vertical beam so that you may remove the slider tube from the stored shipping position. Insert the slider tube through the rectangular hole at the top of the vertical beam and use the tab lock pin to secure it into place. NOTE: this standard slider tube is adjustable from 4" and up to 8" wall thicknesses. A longer slider tube (ST0134) is available as an accessory for up to 14" wall thicknesses.
4. Slide the slider bracket onto the slider tube with the longest side facing the vertical beam and lock into place with the attached tab lock pin at the desired wall width adjustment.

Parts Diagram



5. Adjust the horizontal beam to the desired height by tilting the horizontal beam upward and sliding it to the desired position on the vertical beam. Rotate the horizontal beam so that it is perpendicular to the vertical beam and the stop plate is seated inside one of the adjustment notches on the back of the vertical beam.

Standard Unit

1. Tab Lock Pin
2. Slider Bracket
3. Slider Tube
4. Vertical Beam (8' or 6')
5. Horizontal Beam
6. Thumb Screw
7. Detent Pin
8. Guardrail Post

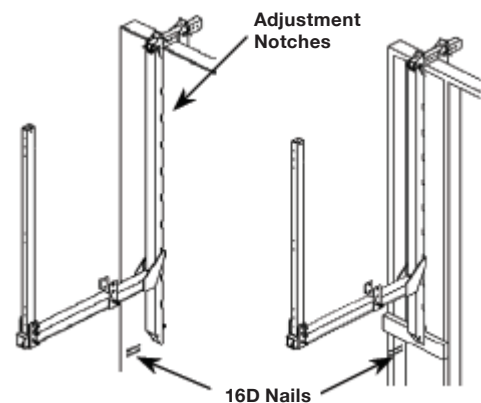
9. Plank Bracket
10. Notched Plank Bracket
11. Guardrail Brackets

Accessories (sold separately)

12. End gate pin
13. End gate
14. Long Slider Tube (not shown)
15. Mid-Wall Bracket (not shown)
16. Stabilizer Bar (not shown)

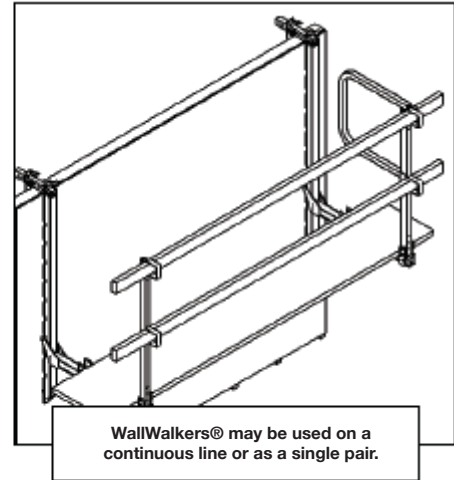
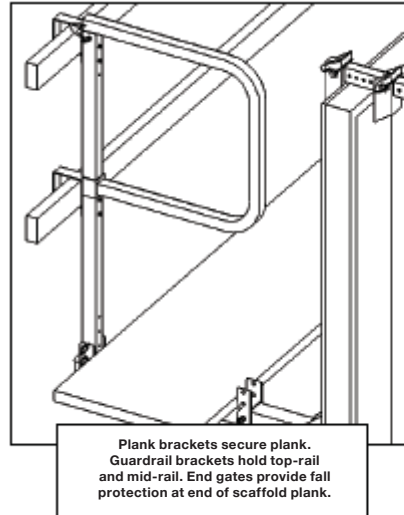
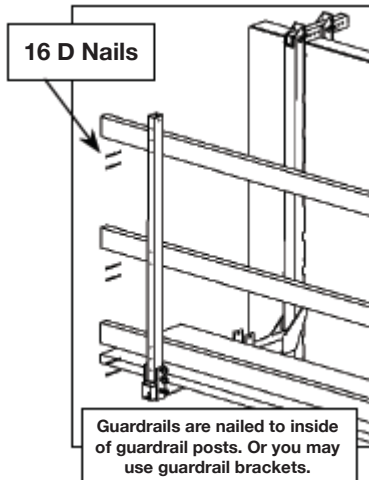
SETUP

1. Ensure that the wall or structure that will be supporting the WallWalker® is properly braced. Wallwalkers® can be installed on sheeted or unsheeted walls and secured with 16D nails at the base.
2. Place the WallWalker® so that the base of the slider tube is resting on the top of the wall or opening in the structure. The vertical beam will rest on the sheeted wall, beam or stud. The WallWalkers® may be hung on the inside or outside wall.
3. You may secure the base of the WallWalker® to the wall or stud through the two holes at the base of the vertical beam. This may be done with 16D nails or comparable fasteners. This will help with undesired movement of the WallWalker® while setting the scaffold plank onto the horizontal beam. NOTE: a 2x4 or Stabilizer Bar accessory (SB042) may be attached to the base of the WallWalkers® and rest on at least two studs on a unsheeted wall so that the load may be adequately distributed.
4. Place scaffold plank that meets OSHA standards onto the horizontal beams of the WallWalkers® between the plank brackets. Insert the thumb screws into the threaded inserts on the sides of the plank brackets. Use the plank brackets to secure the planks to the WallWalkers®. The notched plank bracket should fit over the lip of most aluminum scaffold planks and secure the plank to the horizontal beams.



CAUTION! Read all instructions and warning labels supplied with the WallWalkers®

Wall Walker
Hanging Scaffold



GUARDRAIL INSTALLATION

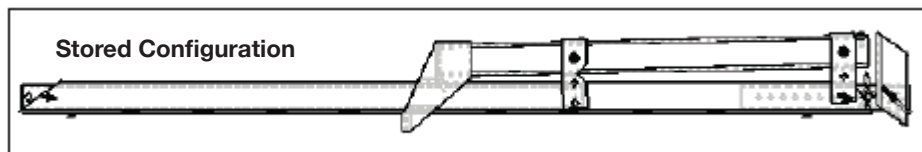
1. Remove the guardrail posts from the storage position at the base of the vertical beam. Use the detent pins (included) to secure the guardrail post to the outer plank bracket.
2. Apply quality 2x4 lumber to the inside of the post with 16D nails to secure top-rails, mid-rails, and toe boards where required. (*Note – The included guardrail brackets may be attached to the guardrail posts for quicker installation of top-rails and mid-rails. End gates may also be secured to provided fall protection at the end of each WallWalker®)

**All fall protection and fall restraint systems used in conjunction with the WallWalker®, including strength and installation of guardrails and toe boards must meet all local, state and federal codes.

STORAGE INSTRUCTIONS

1. Remove guardrail post from the plank bracket. The guardrail post may be stored inside the vertical beam and secured with a detent pin if the guardrail brackets have not been attached to the post.
2. Fold horizontal arm so that it rests next to the vertical beam. The WallWalker® may be locked in the folded position by securing the outer plank bracket to the top of the vertical beam with one of the detent pins. The slider tube may store in the top of the vertical beam secured with the same detent pin. The slider bracket remains secured to the slider tube with the tab lock pin.

Top-rail and mid-rail may be nailed to inside of guardrail posts if guardrail brackets are not being used.



Thank you for using WallWalker®

WallWalker® is the only lightweight aluminum hanging scaffold with a money-back guarantee. Save time. Build smarter. The WallWalker provides a safe platform for hard-to-reach places from the top plate. It eliminates unsafe and makeshift or heavy steel alternatives!

Wall Walker
Hanging Scaffold

TEL 801-835-1081
FAX 206-337-7805

Eagle Mountain, Utah 84005
www.wallwalker.com