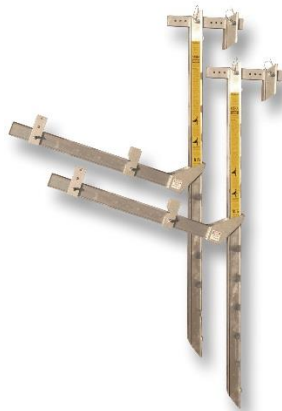




2016 Product Information



#WW03644 – 1 Pair WallWalker Brackets with 6' Long Vertical Beams and 44" Horizontal Arms with Guardrail Posts & Guardrail Brackets



#WW03844 – 1 Pair WallWalker Brackets with 8' Long Vertical Beam and 44" Horizontal Arms with Guardrail Posts & Guardrail Brackets

ACCESSORIES



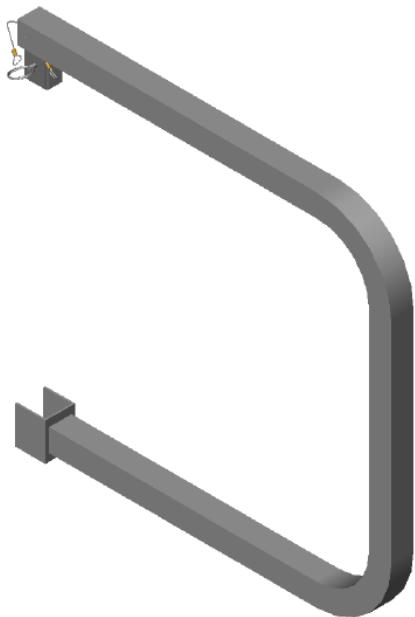
#ST0314 & #ST1420 – 1 Pair of longer Slider Tubes. Allows you to hang WallWalker Brackets over walls thicker than 10 and up to 20 inches. We also make custom Slider Tubes for any wall thickness.



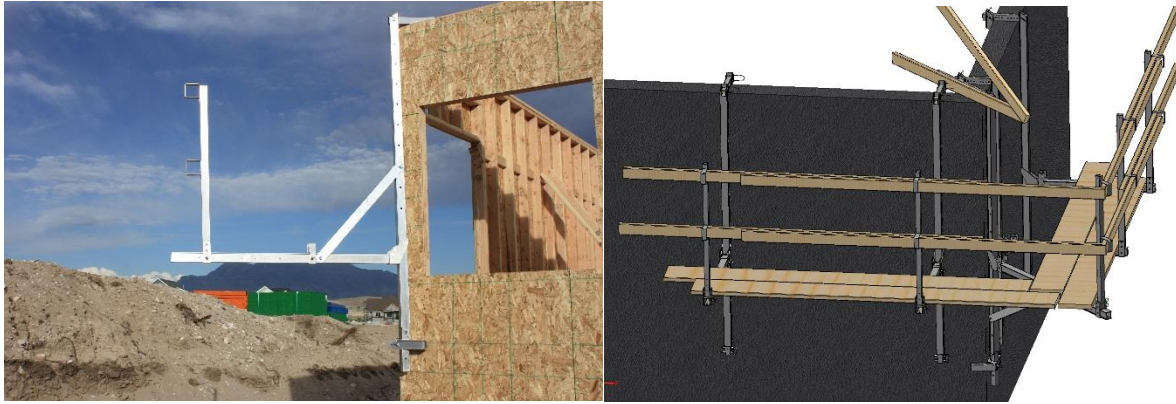
#MWB6 – 1 Pair of Mid-Wall Brackets. Allows you to hang the WallWalker Brackets on any 2x4 or 2x6 stud through a sheeted or non-sheathed wall below the top-plate.



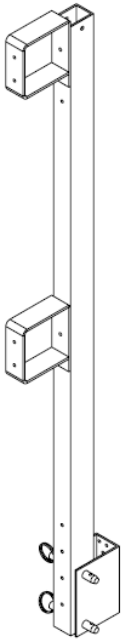
#SB042 – 1 Pair of Stabilizer Bars. Can be inserted into the base of the WallWalker for support across windows and non-sheeted walls in necessary.



#EG03A – Endgate. Can be attached to the Guardrail Post at the end of a platform to provide additional fall protection.



NEW - #WW1565CB – Corner Bracket. Extends platform support as far as 65” from the corner of a wall to safely work around a hip roof with full guardrail protection.



NEW - #GGPB16 – Gable Guardrail Post and brackets. Mounts to the sub fascia of a gable roof to provide fall protection while performing roof work.